

CONDITION SCORING OF EWES

Condition Score 0

Extremely thin, no muscle or fat between skin and bones

Condition Score 1

Spinous processes sharp and stick up

Transverse processes sharp and finger easily pushes under ends

Loin muscles concave, no fat

Condition Score 2

Spinous processes less sharp

Finger can push under processes with little pressure

Loin muscle moderate depth, no fat

Condition Score 3

Spinous processes stick up slightly, smooth and rounded, firm pressure needed to detect each one separately

Transverse processes smooth and covered, firm pressure required to push fingers under ends

Loin muscle full and some fat cover

Condition Score 4

Spinous processes can be just felt and are level with flesh on either side

Ends of transverse processes cannot be felt

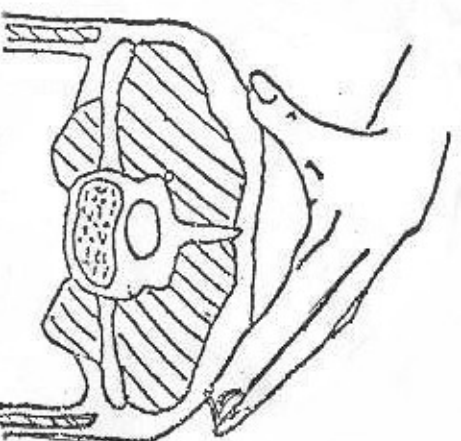
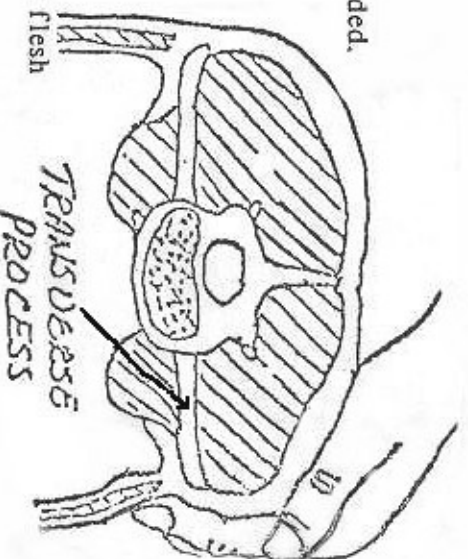
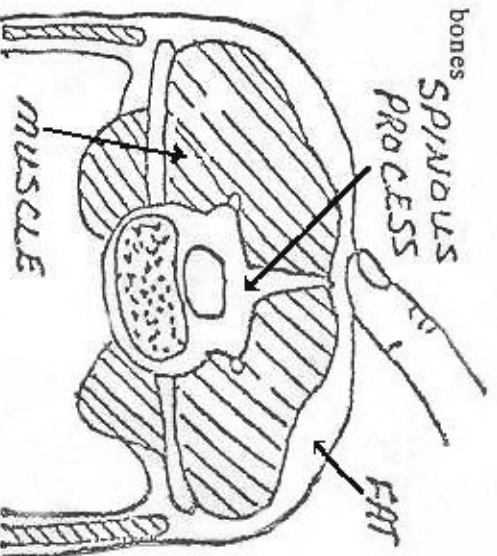
Loin muscle full and thick fat

Condition Score 5

Spinous processes cannot be felt at all, hollows in back

Transverse processes cannot be felt

Loin muscle fully developed, thick fat cover



Viewed as a cross section
of the ewe